

or

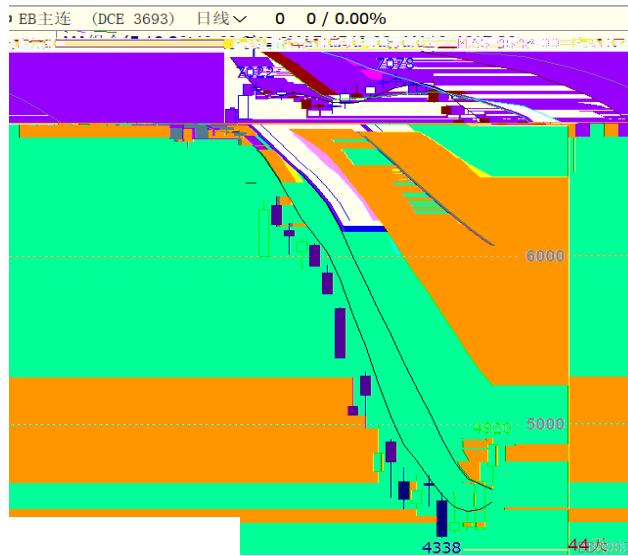
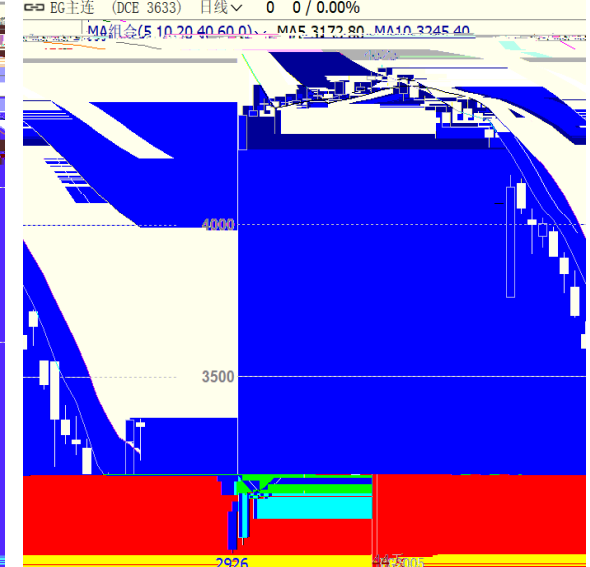
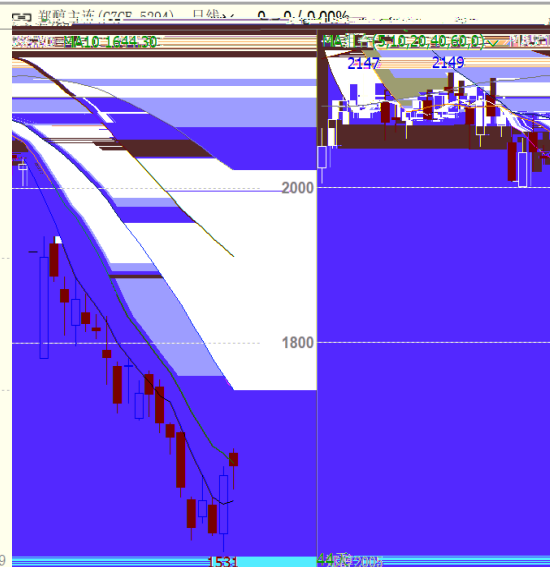
2020 4 7



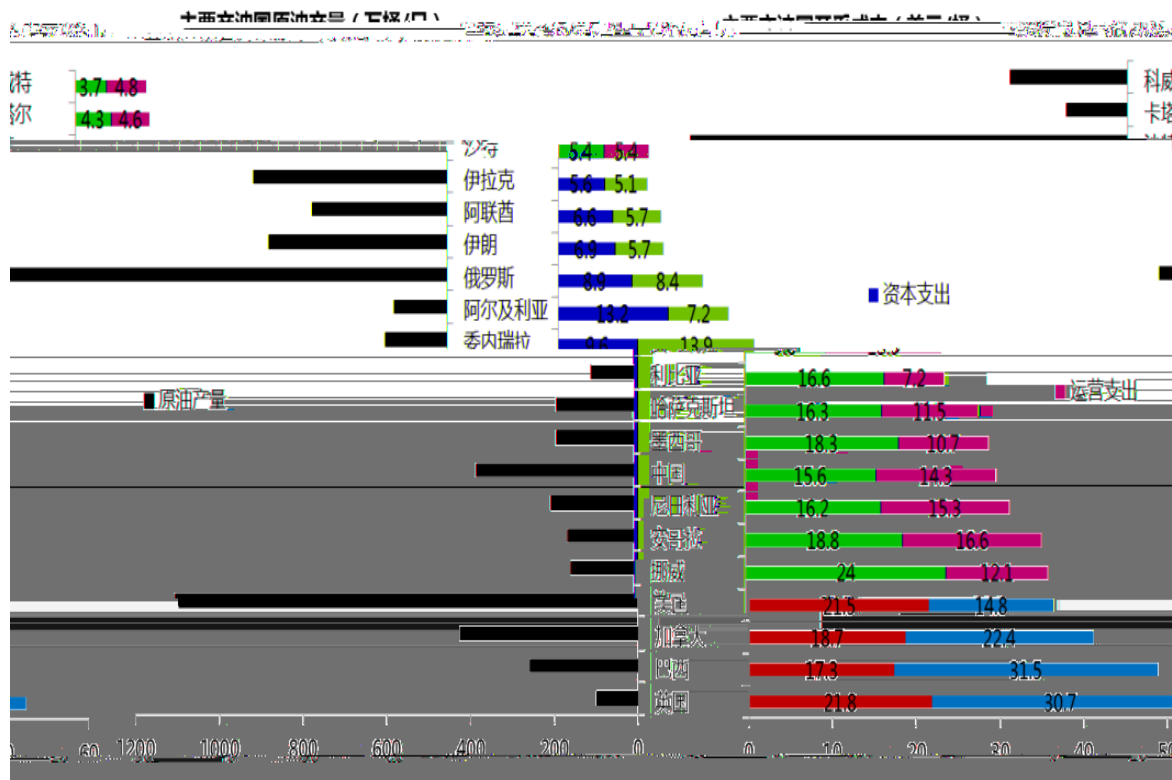
化工板块(文华指数 7191) 月线 98.09 2.72 / 2.85%

MA组合(5,10,20,40,60,0) MA5 112.10 MA10 119.51 MA20 129.21 MA40 135.02 MA60 128.05

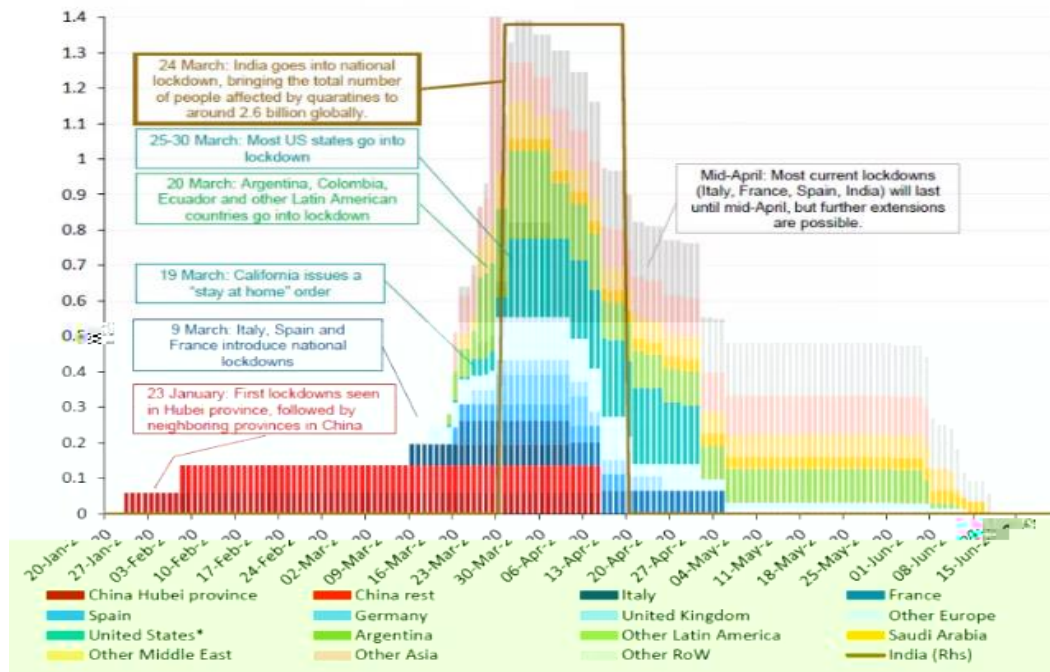




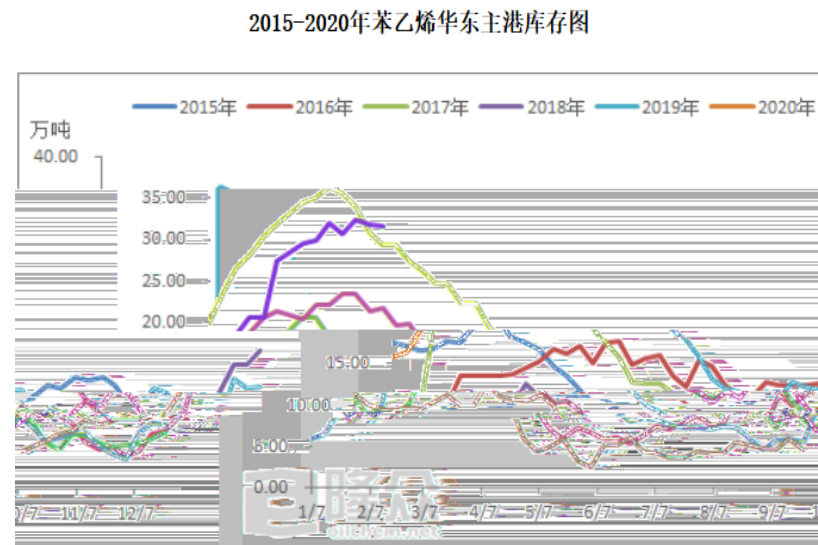
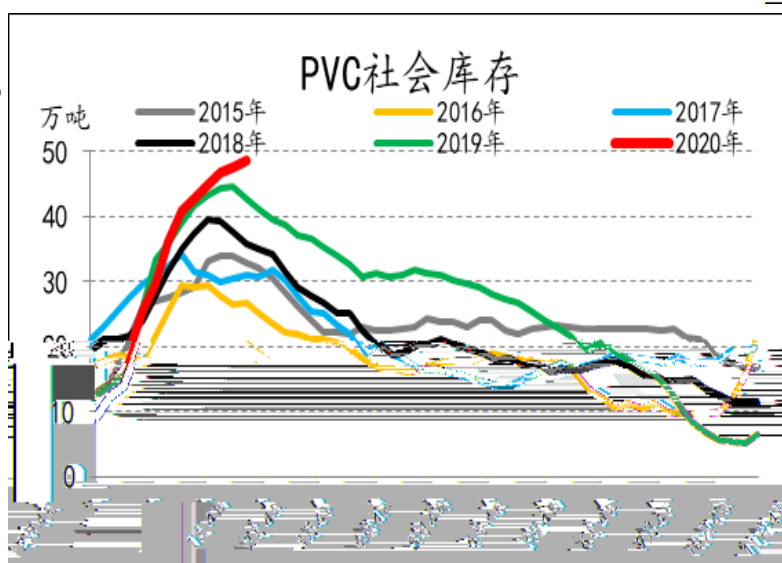
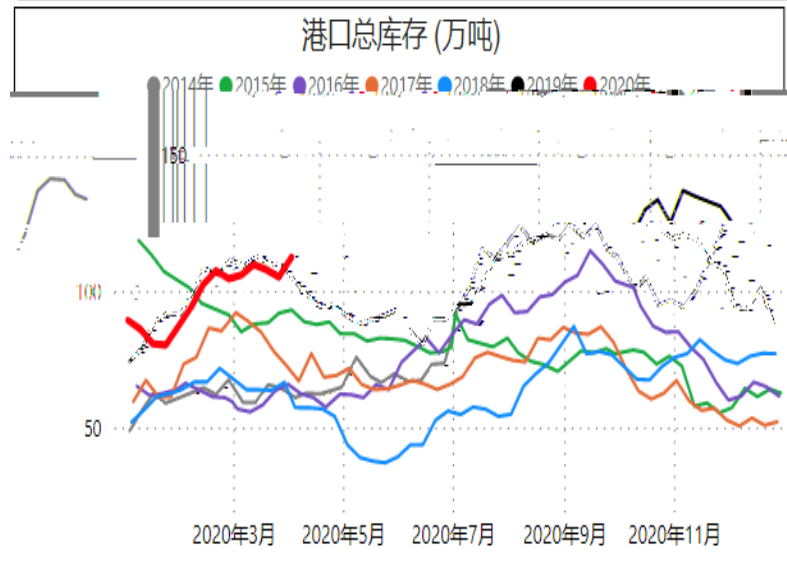
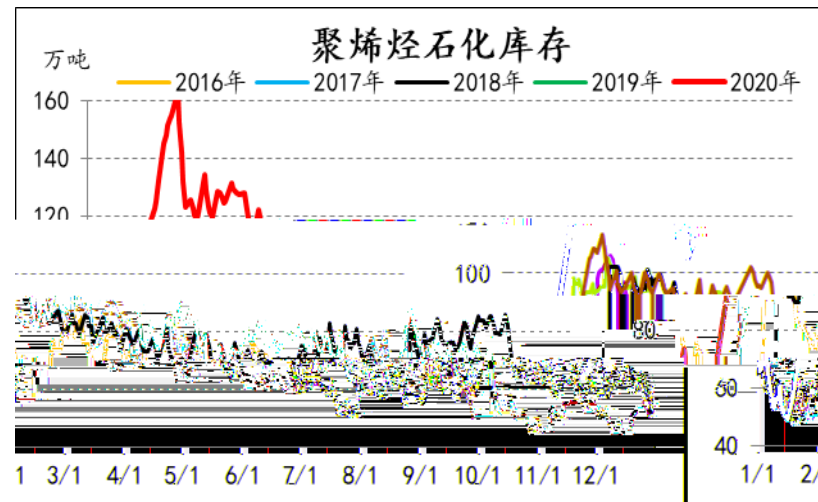
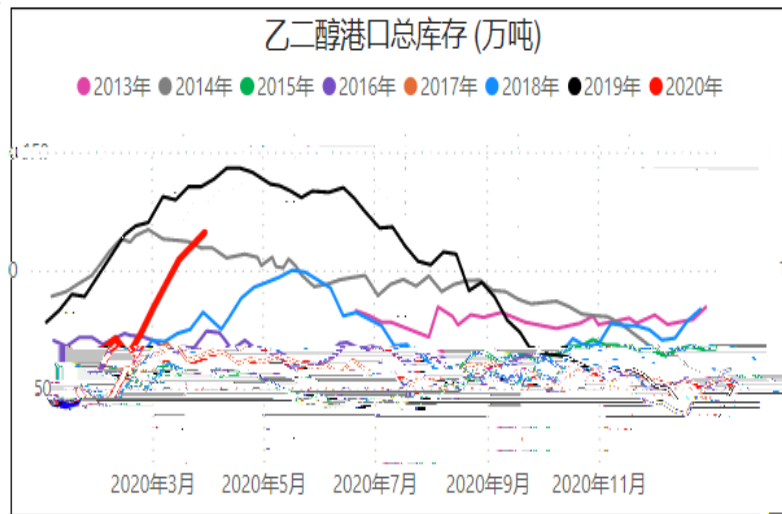
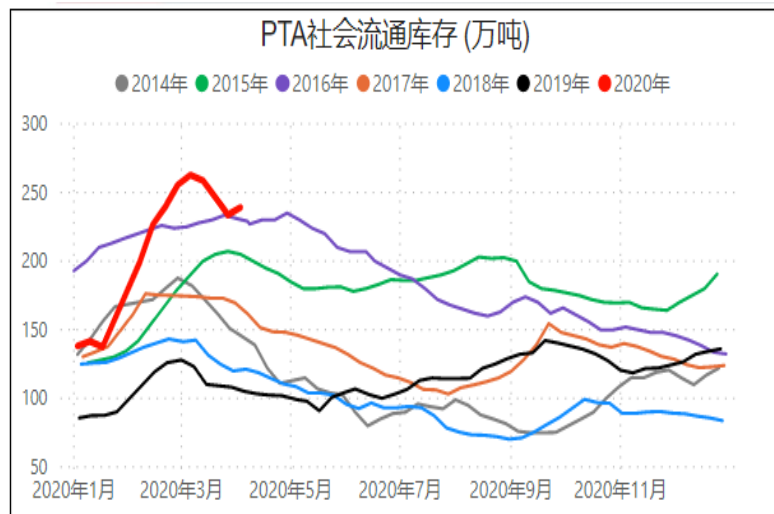
	×	×	↑	↓	↓	↓	↓
	×	√	↓	↑	↑	↓	↓
	√	√	↓	↑	↑	↑	↑
	√	×	↓	↓	↓	↑	↑

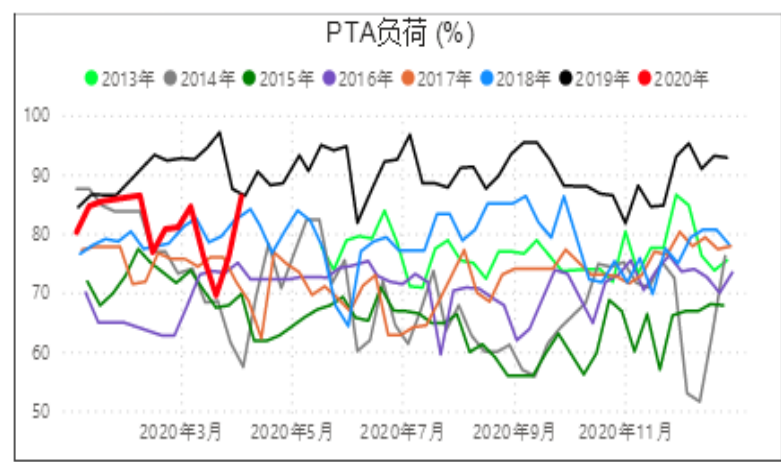
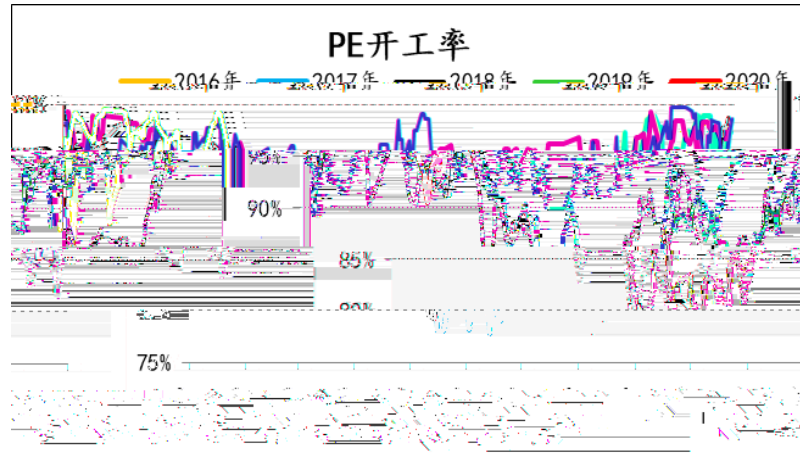
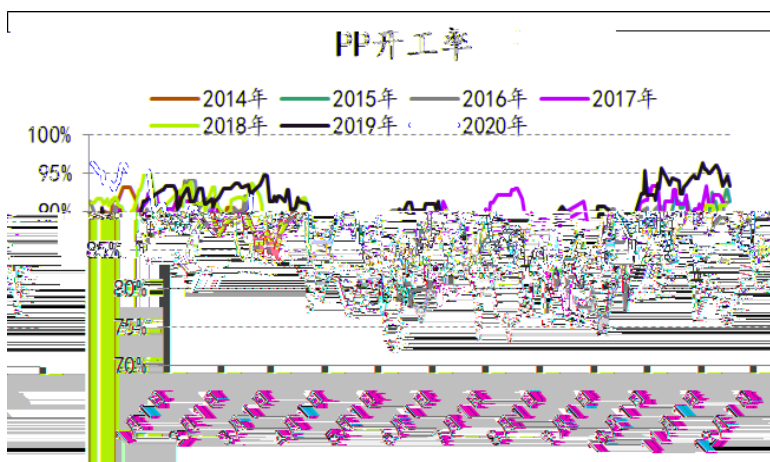
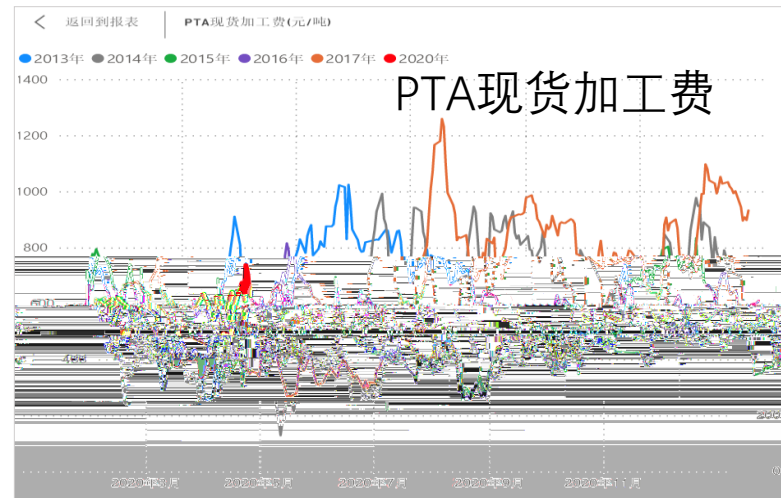
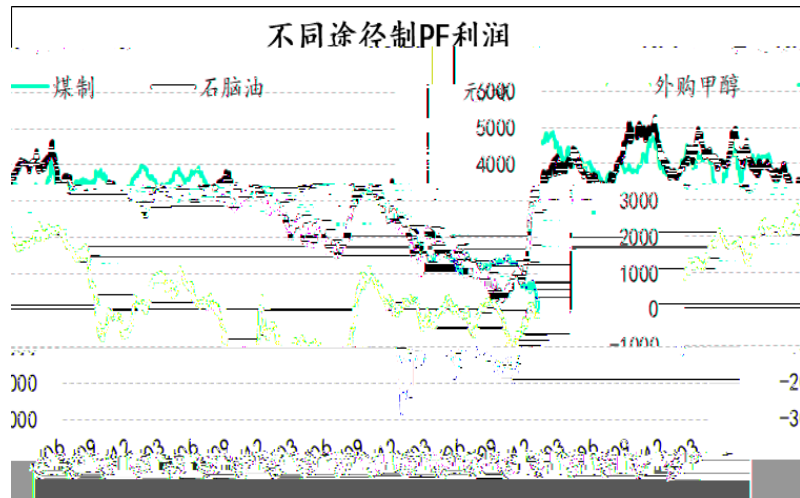
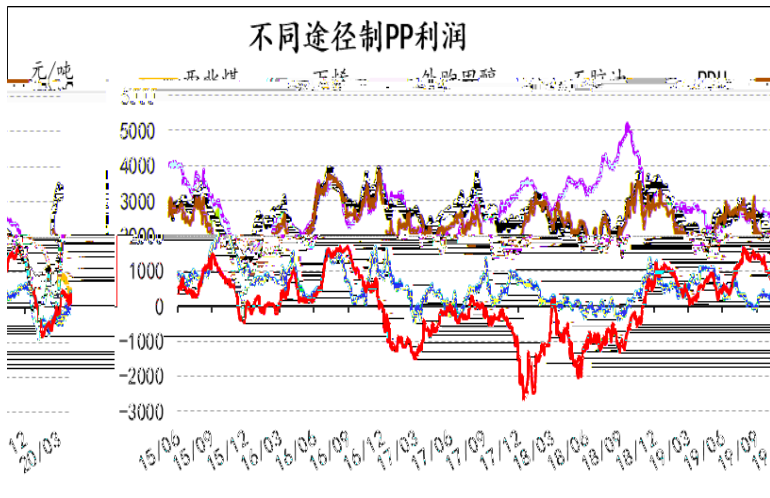


图表 4: 全球隔离措施影响人口 (十亿)



资料来源: Rystad Energy







Z0012670

0571-28132578

F3049542
0571-28132632
adamzang163



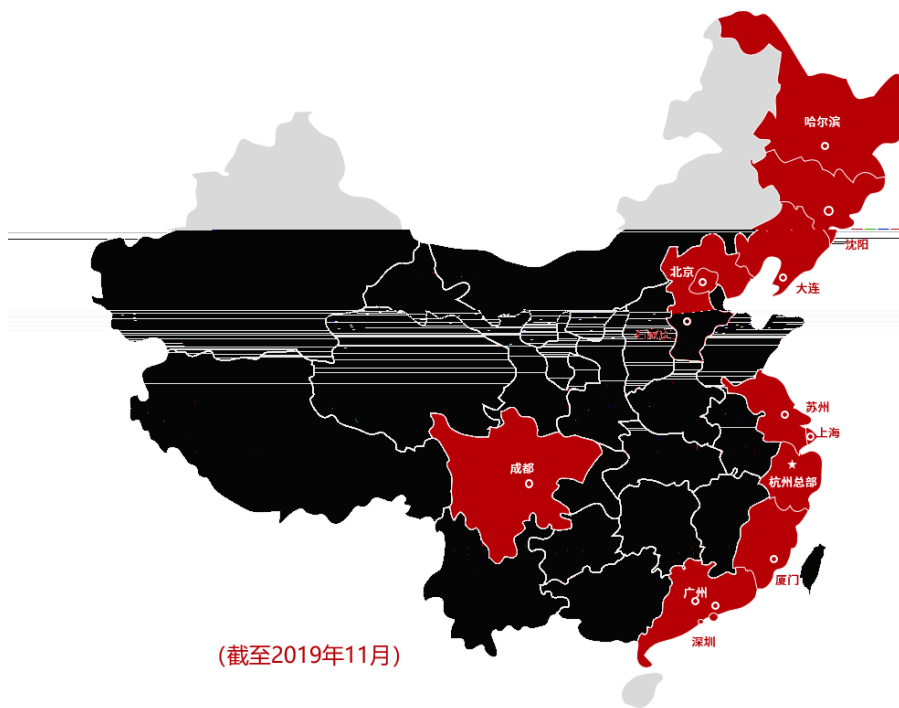
PTA
: F3047762
0571-28132528
hanbb360



PP PE PVC
: F3059668
0571-28132528
zhizu_mayday



20
: F3063756
0571-28132592



公司分支机构分布

6家分公司 13家营业部

金华分公司、台州分公司、深圳分公司

苏州分公司、四川分公司、福建分公司

北京营业部、上海营业部、广州营业部、哈尔滨营业部、大连营业部

沈阳营业部、石家庄营业部、绍兴营业部、宁波营业部、乐清营业部

临安营业部、富阳营业部、萧山营业部